



Available to Order

2027 McConaghy Boats MC63p Offshore

63' (19.30) 2027 McConaghy Boats MC63p Offshore

China



\$4,960,000

OVERVIEW

Manufacturer:	McConaghy Boats	Hull Material:	Other
Engines:	—	Cruise Speed:	—
Engine Model:	—	Max Speed:	—
Engine HP:	875.00	Cabins / Heads:	—
Beam:	31	Fuel Type:	Diesel
Max Draft:	—	Fuel:	2113.38
Water:	396.26		

Data Sheet

Category:
Subcategory:
Condition: New
Model Year: 2027
Beam: 31
Max Draft:
LOA: 63
Cabins:
Sleeps:
Single Berths:
Double Berths:
Queen Berths:
King Berths:
Heads:

Crew Cabins:
Captain's Quarters:
Crew Sleeps:
Maximum Speed:
Cruise Speed:
Range NM:
Fuel Type: Diesel
Hull Material: Other
Hull Shape:
Hull Finish:
Factory Demo:
Air Conditioning:
Bridge Clearance:
Max Passengers:

Displacement:
Fuel Tank: 2113.38
Fresh Water: 396.26
Holding Tank:
Imported:
Builder: McConaghy Boats
Exterior Color:
HIN / IMO:
In Stock:

Engines / Generators

Engine 1
Scania

Engine 2
Scania

875.00 HP
Fuel: Diesel
Location:

875.00 HP
Fuel: Diesel
Location:

Generator 1 KW hrs

Generator 2 KW hrs

Summary / Description

Introducing McConaghy Boats MC63p Offshore

Lightweight, and strong with contemporary, progressive lines, the MC63p Offshore is the power cat of the modern era.

McConaghy's carefully considered use of carbon and precise hull forms and fixed foils makes for a particularly fuel-efficient vessel at her 20-knot cruising speed, yet the MC63p Offshore can achieve a top speed of 36 knots and offers a range of 1,500 nautical miles.

Three versatile interior arrangements are available, allowing for a three or four-cabin layout or an arrangement that positions the master suite on the main deck. Twin bunk cabins forward allow for the accommodation of crew, and McConaghy welcomes clients to specify their own cabin configuration.

Retractable glass panels flank the open-plan saloon and galley, and full-height bi-fold glass doors connect this dynamic social space to the aft deck. On the port side, a spiral staircase leads up to the flybridge.

Interior styling comes from m2atelier, an award-winning studio with extensive experience in both large custom yachts and the production sector. Their attention to detail and innovative storage solutions that allow for living space to be maximized, making the MC63p Offshore a mini-superyacht with luxury and performance ability perfectly partnered.

The MC63p Offshore carries her tender on an aft cradle, deployed and recovered by a hydraulic lift system. A tender or water toys can also be stowed on the foredeck.

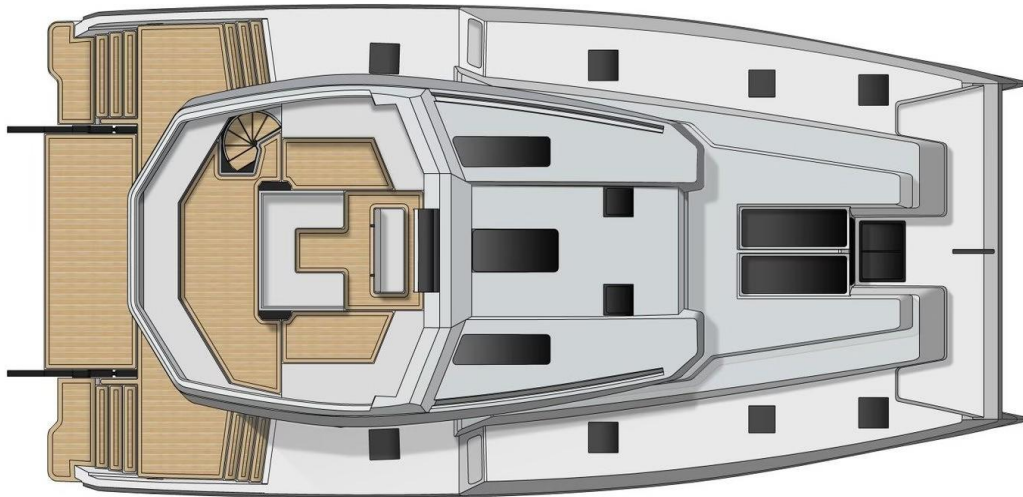
VIYB Ltd is pleased to assist you in the purchase of this vessel. This boat is centrally listed by Troyer Yachts. It is offered as a convenience by this broker/dealer to its clients and is not intended to convey direct representation of a particular vessel





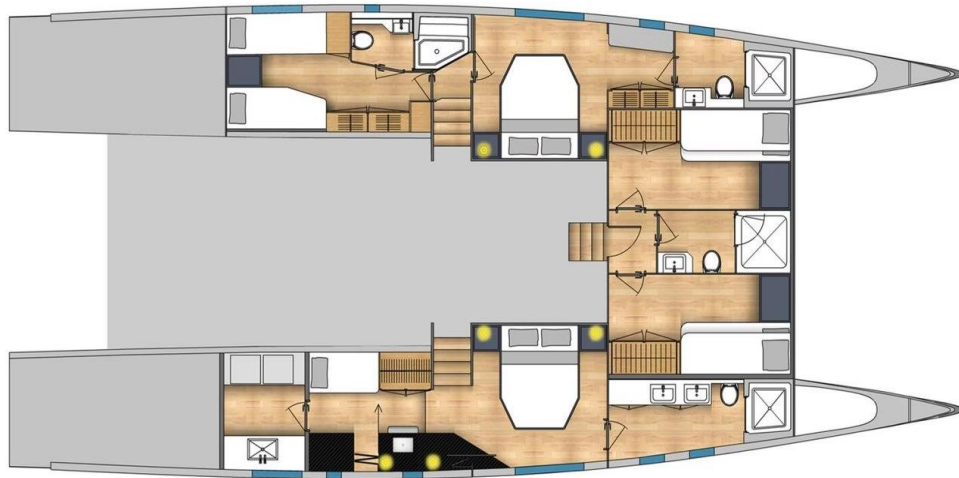






MC63
MULTIHULL OFFSHORE

FLYBRIDGE



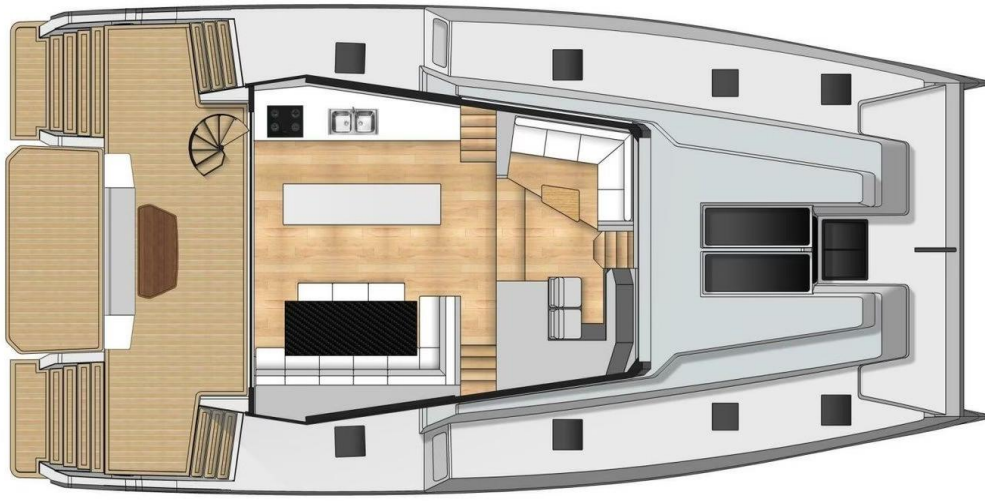
MC63_p OFFSHORE
MULTIHULL

CABIN LAYOUT



MC63_p OFFSHORE
MULTIHULL

4 CABIN LAYOUT



MAIN DECK

MC63P OFFSHORE
MULTIHULL

MAIN DECK









